

DS-3E2736-HI-24F8T4X 24 GE SFP, 8 GE RJ45, 4 10G SFP, Smart L2+ Switch



DS-3E2700-HI series Ethernet switch adopts the industry-leading ASIC technology to develop a new generation of high-performance, high-port density, high-security and easy-to-install intelligent network-managed Gigabit Ethernet switches that support IPv4/IPV6 dual-stack management and forwarding. It supports static routing protocols and routing protocols such as RIP and OSPF and supports rich management and security features. DS-3E2700-HI products are mainly positioned at the access layer and aggregation layer of enterprises and campuses, meet high-density Gigabit access, fixed 10 Gigabit uplink ports, and build high-performance end-to-end IP networks.

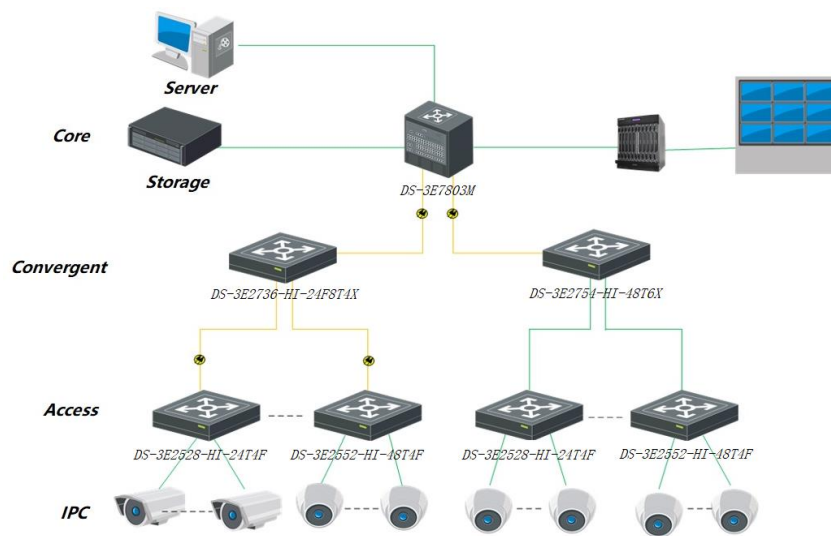
- The virtualization technology allows each slave device in the stack to serve as the backup of the master, creating control and data link redundancy, as well as uninterrupted layer-3 forwarding. This improves the reliability, avoids unplanned business downtime and serves to improve overall performance. When the master device fails, traffic remains uninterrupted
- The switch offers a large number of inbound and outbound ACLs and VLAN-based ACL assignment.
- The switch supports Unicast Reverse Path Forwarding (uRPF), which protects a network against source spoofing attacks, preventing DoS and DDoS attacks
- DS-3E2700-HI switch series features multiple redundancy measures at the device and link levels, support current and voltage surge control, overheat protection, CPU protection, power and fan troubleshooting and alert, as well as fan speed adjustment when the temperature changes.
- Apart from device level redundancy, DS-3E2700-HI series switch also provides diverse link redundancy support such as LACP/STP/RSTP/MSTP/Smart Link protocols. It supports redundancy backup as well as cross-device link aggregation which substantially increases network reliability.
- Support speed limit on port and traffic to prevent malicious invasion of network bandwidth and provide multiple granular management tools. Support SP (Strict Priority), WRR (Weighted Round Robin), and SP+WRR queue scheduling algorithms, and support multi-priority data transmission. Support rich IPv6 services and multiple IPv6 management tools.
- Support CLI command line, Web network management, and Telnet, making device management more convenient. And support SSH2.0 and other encryption methods, making management more secure. Support remote upgrade of devices through FTP and TFTP, SNMP v1/v2c/v3
- Energy-saving design greatly reduces device power consumption and trouble spots. Radiation is reduced to reach the standard for household electrical appliances and is harmless to humans.

▪ Specification

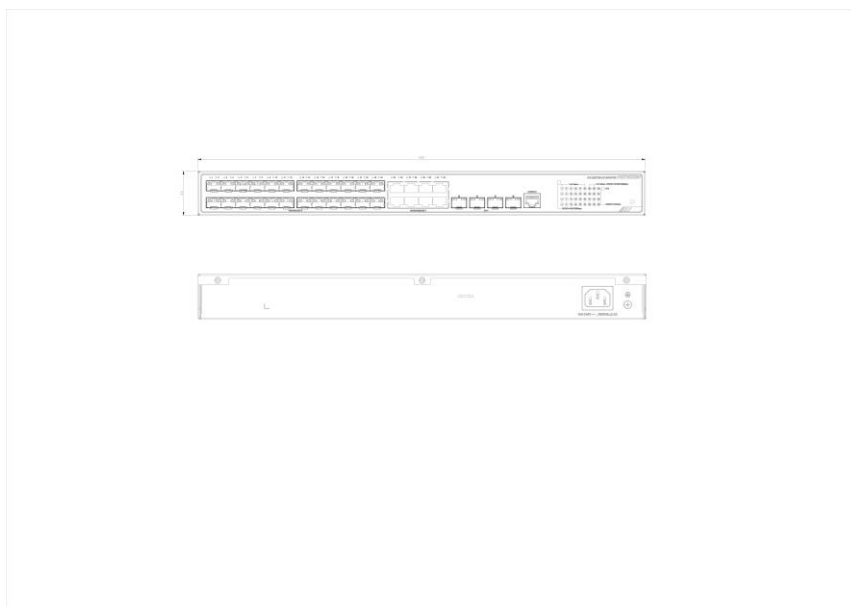
Model		DS-3E2736-HI-24F8T4X
General	Shell	Metal
	Net Weight	3.20 kg (7.05 lb)
	Gross Weight	4.40 kg (9.70 lb)
	Dimensions (W × H × D)	440.00 mm × 260.00 mm × 43.60 mm (17.32" × 10.23" × 1.71")
	Operating Temperature	-5 °C to 45 °C (23 °F to 113 °F)
	Storage Temperature	-40 °C to 70 °C (-40 °F to 158 °F)
	Operating Humidity	10% to 95% (no condensation)
	Relative Humidity	5% to 95% (no condensation)
	Power Supply	AC: 100 V~240 V AC, 50/60 Hz
	Installation Mode	Rack (equipped with mounting ears)
	Max. Power Consumption	54 W
	Power Consumption in Idle	27 W
	Surge Protection	6 kV
Network Parameters	Ports	8 × Gigabit RJ45 port, 24 × Gigabit fiber optical port, 4 × 10G fiber optical port
	MAC Address Table	32 K
	Switching Capacity	Whole-Device Performance: 216 Gbps Port Performance: 144 Gbps
	Packet Forwarding Rate	Whole-Device Performance: 160.71 Mpps Port Performance: 107.13 Mpps
	Internal Cache	2.0 Mbits
Software Function	Ethernet	LLDP Static MAC configuration Limit of number of MAC addresses to be learned (up to 32K) Port mirroring and traffic mirroring Port aggregation (up to 24 groups and 8 ports for each group) Port isolation STP/RSTP/MSTP IEEE 802.3ad (dynamic link aggregation) and static port aggregation RRPP/ERPS (Ethernet Ring Protection Switching) VRRP

	VLAN	802.1Q (up to 4K VLAN) Protocol-based VLAN MAC-based VLAN GUEST VLAN VLAN mapping MVRP
	IP Routing	Static routing RIPv1/v2 and RIPv6 OSPFv1/v2 and OSPFv3 IS-IS Hardware-based IPv4/IPv6 routing Inter VLAN routing
	DHCP	DHCP Client DHCP Snooping DHCP Snooping option82 DHCP Relay DHCP Server
	Multicast	IGMP V1/V2/V3 snooping PIM Snooping Multicast VLAN IPv6 multicast setting
	QoS	SP/WRR/SP+WRR queue scheduling 802.1p and DSCP priority mapping Port speed limit
	ACL	ACL on Layer 2, Layer 3 and Layer 4 IPv4 and IPv6 ACLs VLAN ACL Ingress:1280.Egress:512
	Security	Hierarchical user management and password protection SSH for a secure encrypted channel for user login Specific IP address based FTP logging and password mechanism Prevent attacks from ARP, unknown multicast packet, broadcast packet, unknown unicast packet, TTL=1 packet, and protocol packet MAC address limit IP+MAC+PORT binding IEEE 802.1x Radius and AAA SNMPv3 Broadcast suppression
	System Management	Command line configuration via console/AUX Modem/Telnet/SSH Uploading and downloading of FTP, TFTP, and Xmodem, and SFTP files SNMP V1/V2c/V3 sFlow NQA NTP clock System operating logs
	HPP	Support one-click activation and remote management via Hik-Partner Pro. Functions supported: 1. Display the port rate. 2. Display the port bandwidth utilization rate. 3. Display topology information. 4. Display the alarm status. 5. Restart ports and devices. 6. Remotely upgrade the device.
Approval	EMC	CE-EMC (EN 55032: 2015+A11: 2020, EN IEC 61000-3-2: 2019, EN 61000-3-3: 2013+A1: 2019, EN 50130-4: 2011+A1: 2014, EN 55035: 2017+A11: 2020)
	Safety	CB (AMD1:2009, AMD2:2013, IEC 62368-1: 2014 (Second Edition))
	Chemistry	CE-RoHS (2011/65/EU), WEEE (2012/19/EU), Reach (Regulation (EC) No.1907/2006)

▪ **Typical Application**



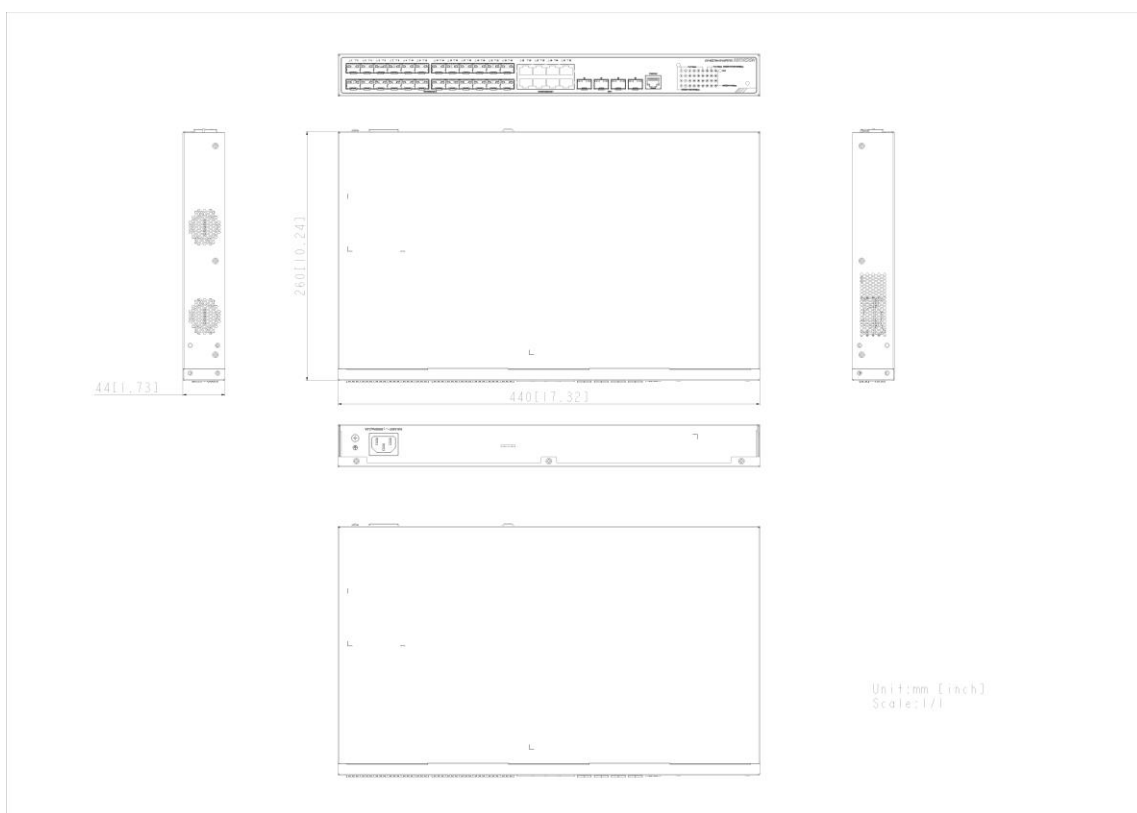
▪ **Physical Interface**



▪ **Available Model**

DS-3E2736-HI-24F8T4X

▪ Dimension



Headquarters

No.555 Qianmo Road, Binjiang District,
Hangzhou 310051, China
T +86-571-8807-5998
www.hikvision.com



Follow us on social media to get the latest product and solution information.

