



C3N

Outdoor Smart Wi-Fi Camera

It takes the night shift for you.

The EZVIZ C3N comes with three night vision modes and AI-powered person detection capability, providing you with sharp nighttime monitoring and precise alerts. Now you can rest easy knowing everything is protected.



Color Night Vision



AI-Powered Person Detection

FHD 1080p

H.265

H.265 Video Compression



Wi-Fi 2.4 GHz with Dual External Antennas



IP67 Dust and Water Protection



Supports MicroSD Card (up to 256 GB)



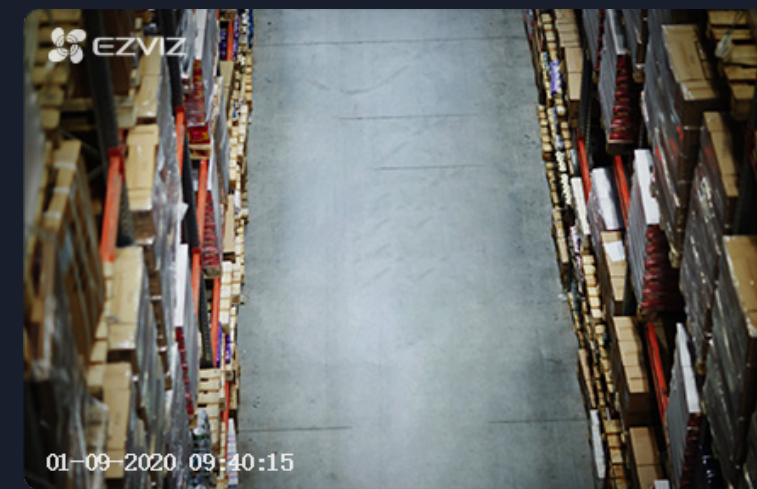
Vivid night imaging.

Equipped with professional optical lenses, two built-in spotlights, and two infrared (IR) lights, the C3N renders sharp color imaging even in pitch-black darkness. And, more than just helping produce color night time imaging, the spotlights can also be used as floodlights to illuminate hidden areas around your property.



Three night vision modes.

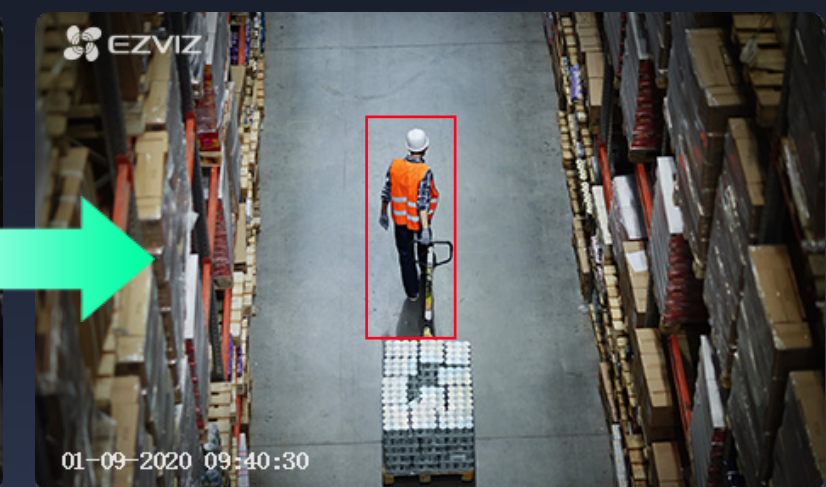
When extra lighting is not a necessity to you, simply switch the camera to black-and-white night vision mode via the EZVIZ App to turn off the spotlights. What's even greater is that you can select smart night vision mode. In this mode, the C3N will automatically switch from black-and-white monitoring to color monitoring, turning on the spotlights when it detects human movement. The alert video will be recorded in full-color, so you get all the details needed.



Color Night Vision Mode



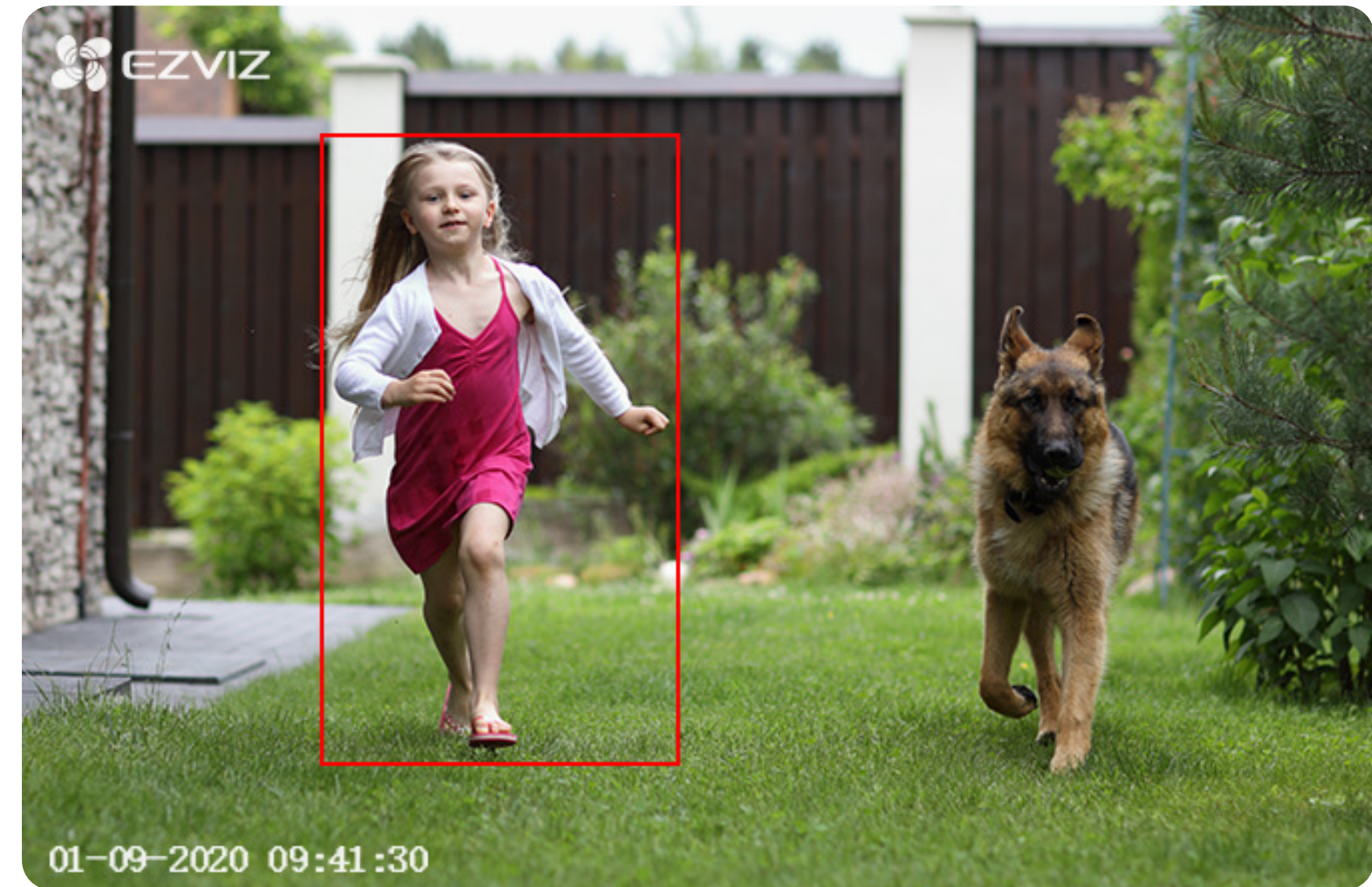
Black-and-White Mode



Smart Night Vision Mode

AI-powered person detection.

As an upgrade from simple motion detection, the embedded AI algorithm intelligently detects the motion of human shapes in real-time. When people enter your customized detection area, you will be alerted immediately.



More details of people captured.

The C3N is powered by advanced PQ technology that is based on intelligent sensing of the actual environment. When people approach, it automatically adjusts the image brightness to avoid overexposure. You see much more detail than the video from conventional systems.



With PQ Technology



Without PQ Technology

Proactive protection.

Upon detection of human movement, the C3N camera can automatically flash or be set manually to flash the two spotlights* to deter unwanted visitors. What's more, when the person turns their head to the flashing light source by instinct, they will be clearly recorded on camera.

*When the Color Night Vision mode is on, the spotlights stay on continuously and will not flash.



Hear what's happening.

The built-in noise-canceling microphone picks up clear audio up to 5 meters (16.4 ft.) away. Now you can hear and see what's happening in your backyard no matter where you are.



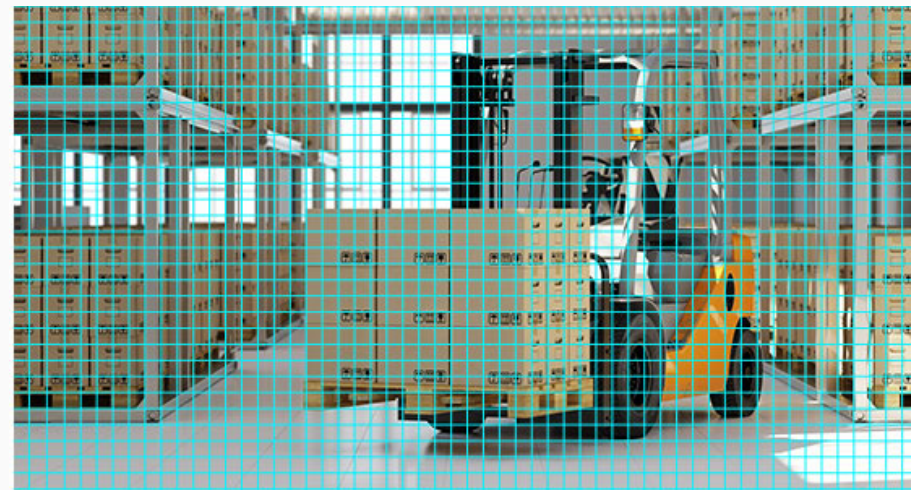
Enhanced Wi-Fi connection.

The C3N signal boasts wall-penetration and anti-interference capabilities thanks to two powerful external antennas. Even if the router is far away, the C3N is still able to stay connected stably and reliably.



Save money on storage and bandwidth.

The camera features the advanced H.265 video compression technology, achieving better video quality with only half the bandwidth and half the storage space of the previous H.264 video compression standard.



H.264 (Mainstream Video Compression)



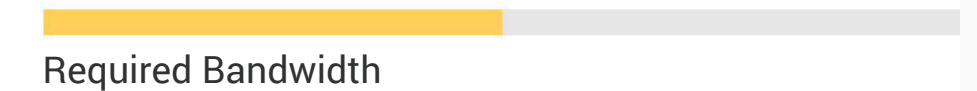
Required Bandwidth



Required Storage Space



H.265 (Upgraded Video Compression)



Required Bandwidth



Required Storage Space

Built to last.

The smart camera's whole metallic enclosure provides stronger protection and enhanced heat dissipation. Plus, with an IP67 rating, it can withstand rainy, sunny, stormy, and even snowy days. Together, the C3N gives you worry-free protection throughout the year.



Easy installation.

The C3N camera features a 360° swivel and base so that you can install it on your ceiling or wall securely. With a few steps, your own sophisticated security system will be operating smoothly.



Specifications CS-C3N-A0-3H2WFRL

Camera

Image Sensor	1/2.7" Progressive Scan CMOS
Shutter Speed	Self-adaptive shutter
Lens	2.8 mm @ F2.0, view angle: 104° (Horizontal), 125° (Diagonal) 4 mm @ F2.0, view angle: 86° (Horizontal), 102° (Diagonal)
Lens Mount	M12
Day & Night	IR-cut filter with auto-switching
DNR	3D DNR
WDR	Digital WDR

Compression

Video Compression	H.264 / H.265
Video Bit Rate	Full HD; HD; Standard. Adaptive bit rate.

Image

Max. Resolution	1920 × 1080
Frame Rate	Max: 30 fps; Self-adaptive during network transmission
BLC	Supports

Interface

Storage	Micro SD card slot (max. 256 GB)
Wired Network	RJ45 × 1 (10 M/100 M Self-adaptive Ethernet port)

Network

Smart Alarm	AI-powered person detection
Wi-Fi Pairing	AP pairing
Protocol	EZVIZ cloud proprietary protocol
Interface Protocol	EZVIZ cloud proprietary protocol
Max. Bitrate	2 Mbps

Wi-Fi

Standard	IEEE802.11 b/g/n
Frequency Range	2.4 GHz ~ 2.4835 GHz
Channel Bandwidth	Supports 20 MHz
Security	64 / 128-bit WEP, WPA / WPA2, WPA-PSK / WPA2-PSK
Transmission Rate	11b: 11 Mbps, 11g: 54 Mbps, 11n: 144 Mbps

General

Operating Conditions	Temperature: -30°C to 60°C (-22°F to 140°F), humidity: 95% or less (non-condensing)
Power Supply	DC 12V / 1A
Power Consumption	Max. 7W
IP Grade	IP67
Night Vision Distance (Black/White Night Vision Mode)	Max. 30 meters (98.43 ft.)
Audio Reception	Max. 5 meters (16.4 ft.)
Dimensions	75.5 × 75.5 × 155 mm (2.97 × 2.97 × 6.10 inch)
Packaging Dimensions	227 × 100 × 92 mm (8.94 × 3.94 × 3.62 inch)
Weight	422 g (0.93 lbs)

In the box:

- C3N Outdoor Smart Wi-Fi Camera
- Drill Template
- Screw Kit
- Waterproof Kit
- Power Adapter: 1.5 m (4.9 ft.)
- Quick Start Guide

Certifications:

CE / WEEE / REACH / ROHS / FCC / UL

Specifications are subject to change without notice. "🌈", "EZVIZ" and other EZVIZ's trademarks and logos are the properties of EZVIZ in various jurisdictions. Other brands and product names are trademarks or registered trademarks of their respective holders.

<https://www.ezvizlife.com/>